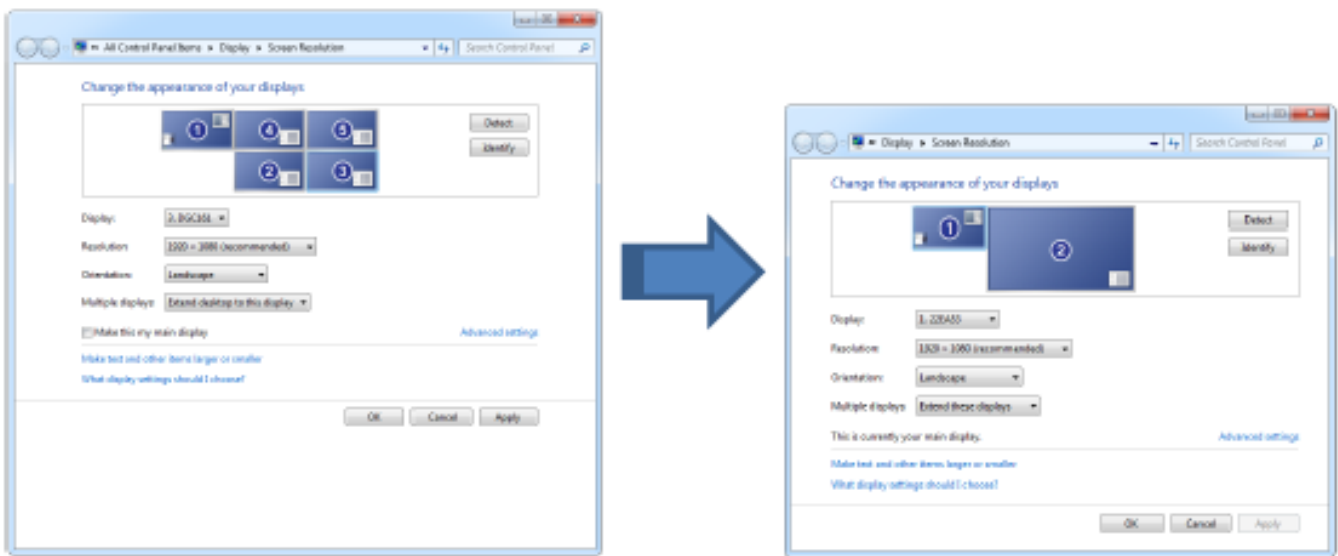


System configuration

How to set up a spanned display with AMD Eyefinity

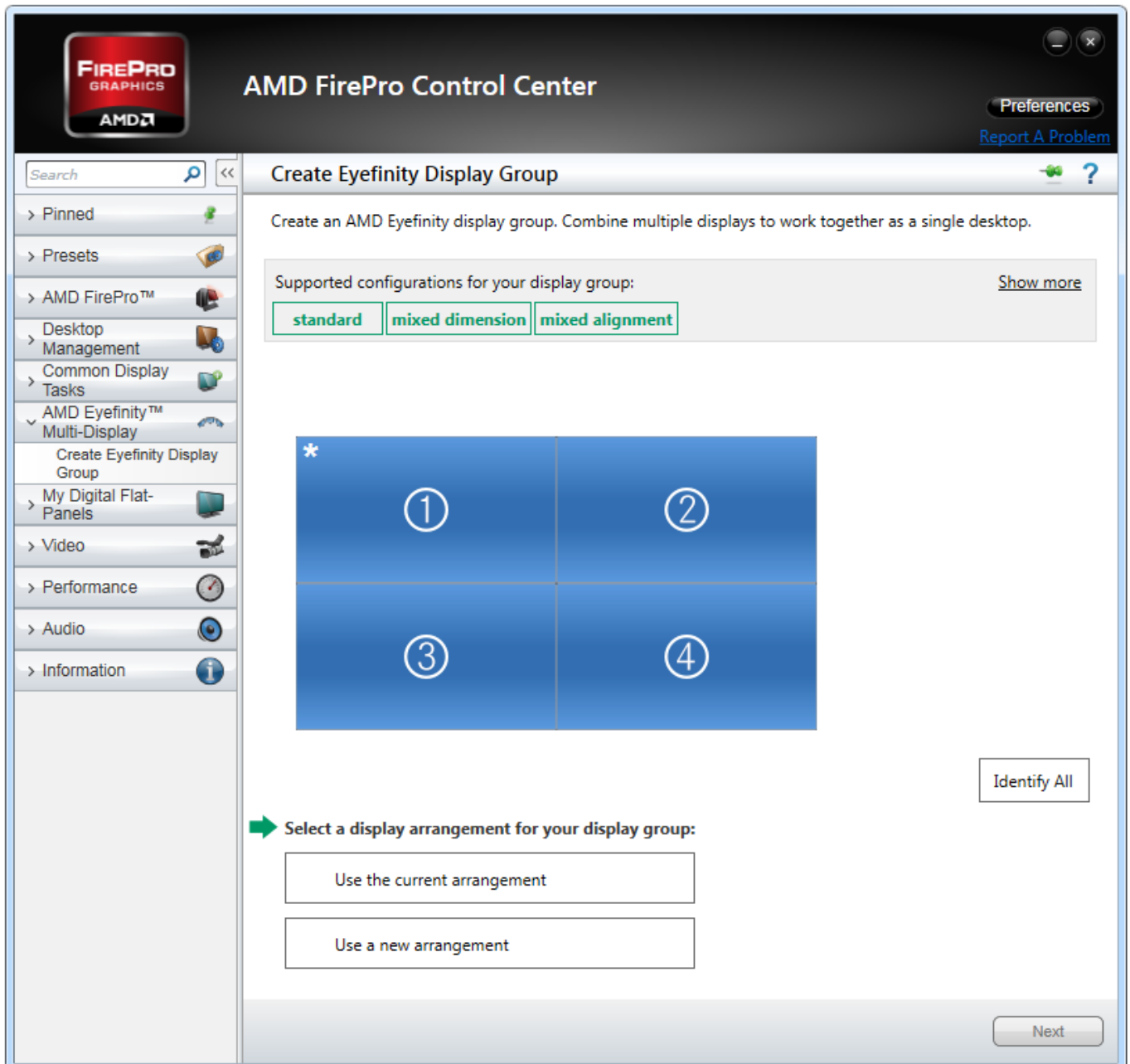
As soon as you use several projectors for use as a large, seamless desktop, having them shown as separate displays in Windows creates several issues. Apart from missing synchronization, the behaviour of any application is not like you would expect - they are not automatically expanded across the entire desktop.

Therefore combining all projectors to a single logical screen for the "eyes" of the operating system is a must.



The feature for this is provided by AMD on all graphics card as "Eyefinity". It is provided by the AMD Control panel. The Eyefinity setting for the above shown display setup looks like this:

System configuration



There are several resources that explain how to create an Eyefinity display group:

- [Creating an Eyefinity Display Group Using AMD Radeon Software \(new drivers\)](#)
- [Setting up AMD Eyefinity Display Groups via Catalyst Control Center](#)

Unique solution ID: #1006

Author: Emanuel Züger

Last update: 2016-08-16 14:05