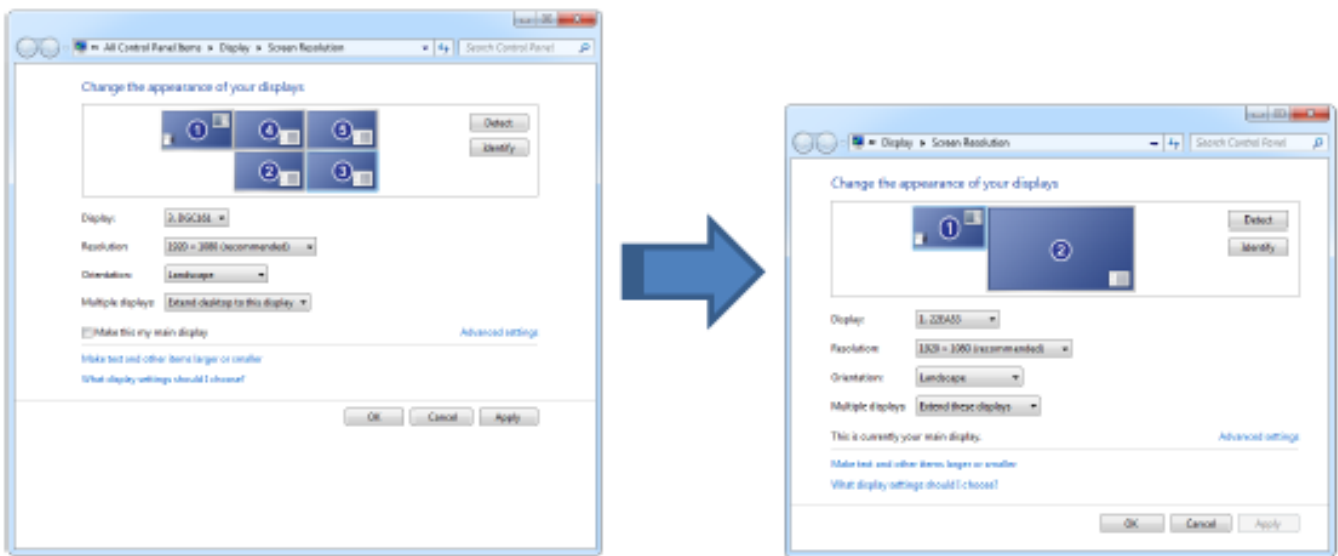


System configuration

How to set up a spanned display with NVIDIA Surround (GeForce)

As soon as you use several projectors for use as a large, seamless desktop, having them shown as separate displays in Windows creates several issues. Apart from missing synchronization, the behaviour of any application is not like you would expect - they are not automatically expanded across the entire desktop.

Therefore combining all projectors to a single logical screen for the "eyes" of the operating system is a must.



The feature for this is provided by NVIDIA GeForce graphics cards as "Surround". It is provided by the NVIDIA Control panel.

This online-guide shows how to create such a Surround setup:

- [Setup Surround using NVIDIA control panel](#)

Unique solution ID: #1005

Author: Emanuel Züger

Last update: 2016-08-16 14:05