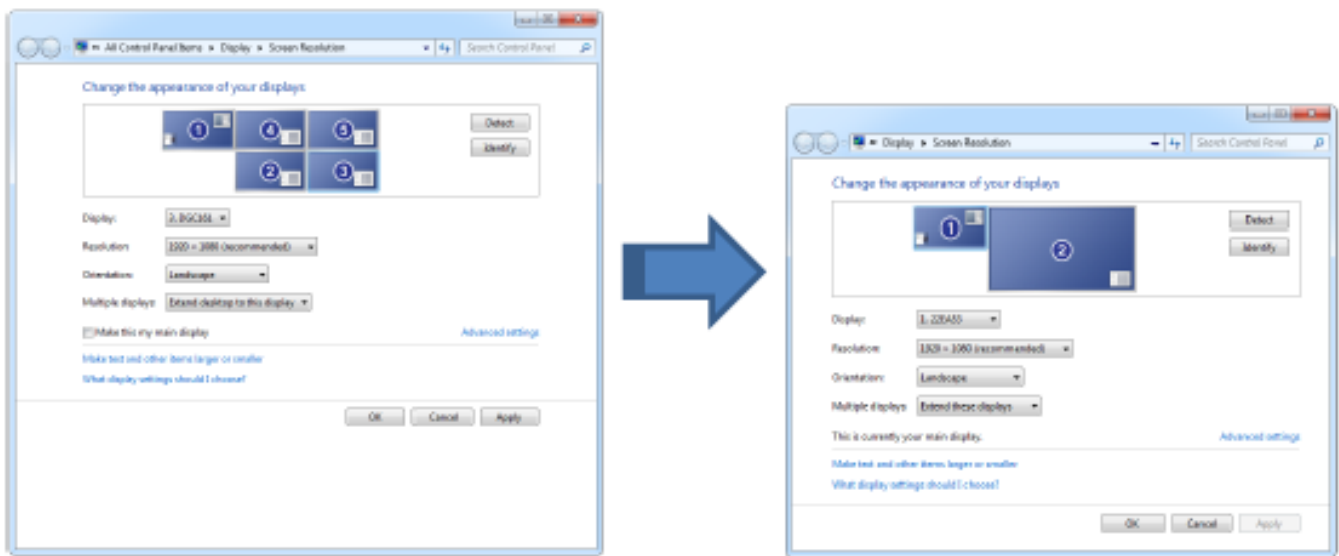


System configuration

How to set up a spanned display with NVIDIA Mosaic (Quadro & NVS)

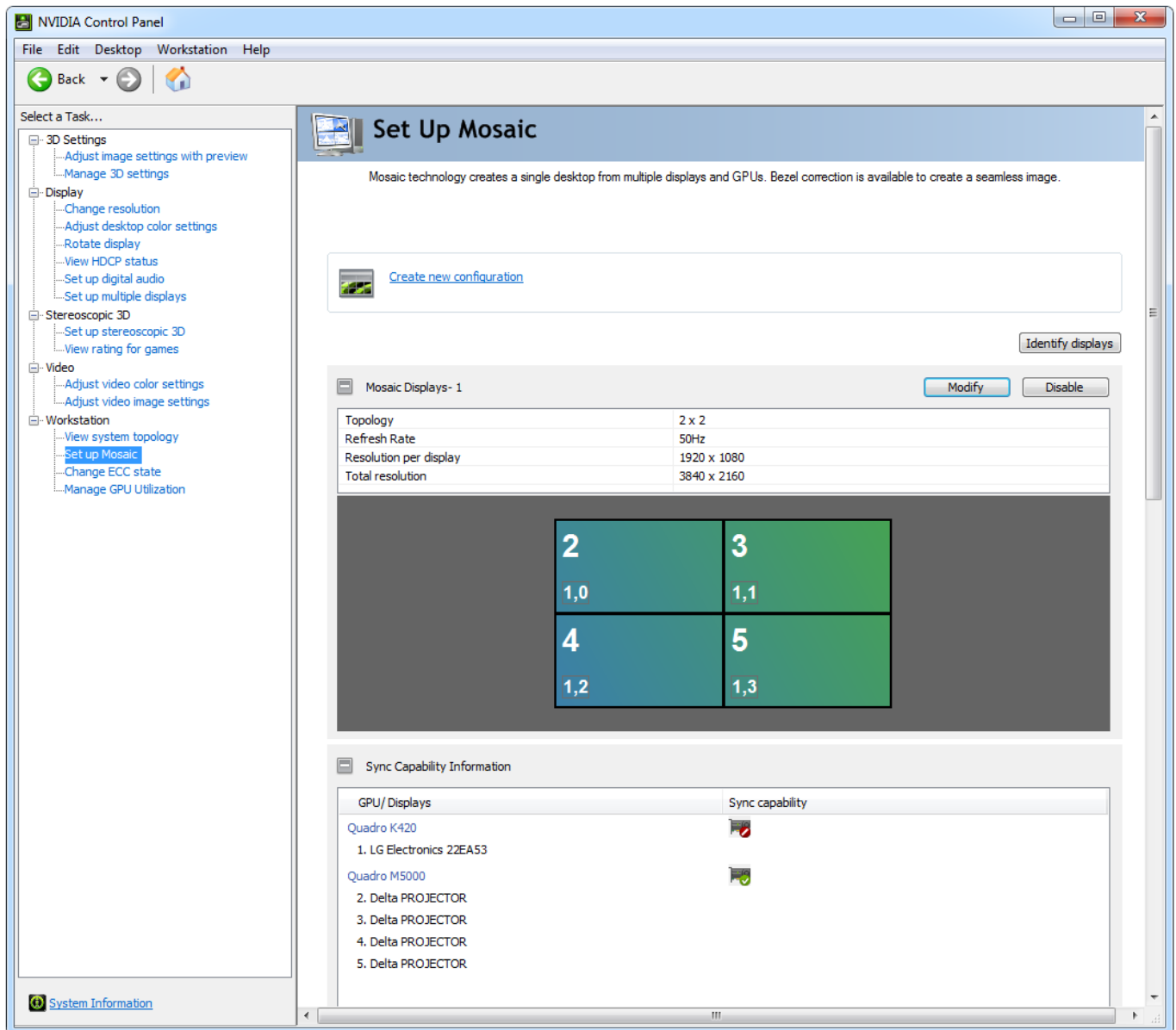
As soon as you use several projectors for use as a large, seamless desktop, having them shown as separate displays in Windows creates several issues. Apart from missing synchronization, the behaviour of any application is not like you would expect - they are not automatically expanded across the entire desktop.

Therefore combining all projectors to a single logical screen for the "eyes" of the operating system is a must.



The feature for this is provided by NVIDIA Quadro graphics as "Mosaic". It is provided by the NVIDIA Control panel. A successful MOSAIC setting for the above shown display setup looks like this:

System configuration



There are several resources that explain how to create a Mosaic setup:

- [Video showing how to setup NVIDIA Mosaic by VIOSO](#)
- [Setup MOSAIC using NVIDIA control panel](#)
- [Detailed documentation of NVIDIA MOsaic \(PDF\)](#)

Unique solution ID: #1004

Author: Emanuel Züger

Last update: 2016-08-16 14:05